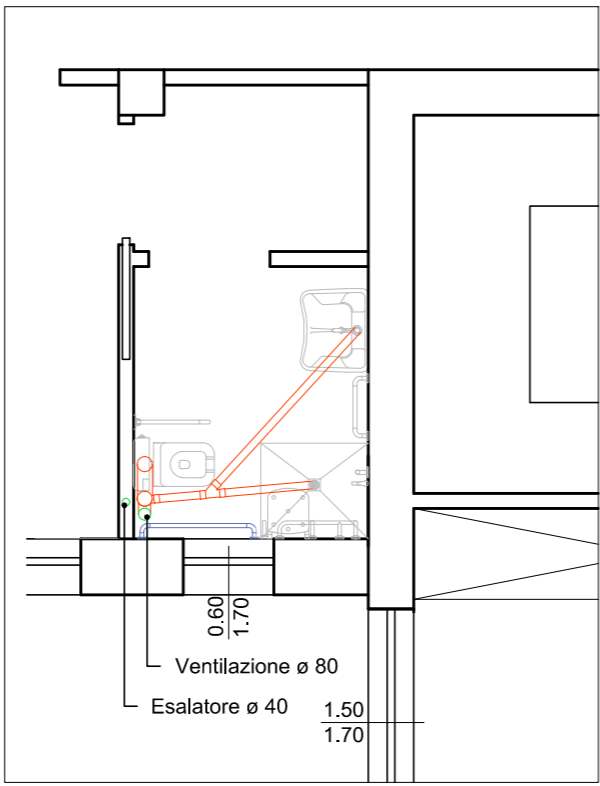
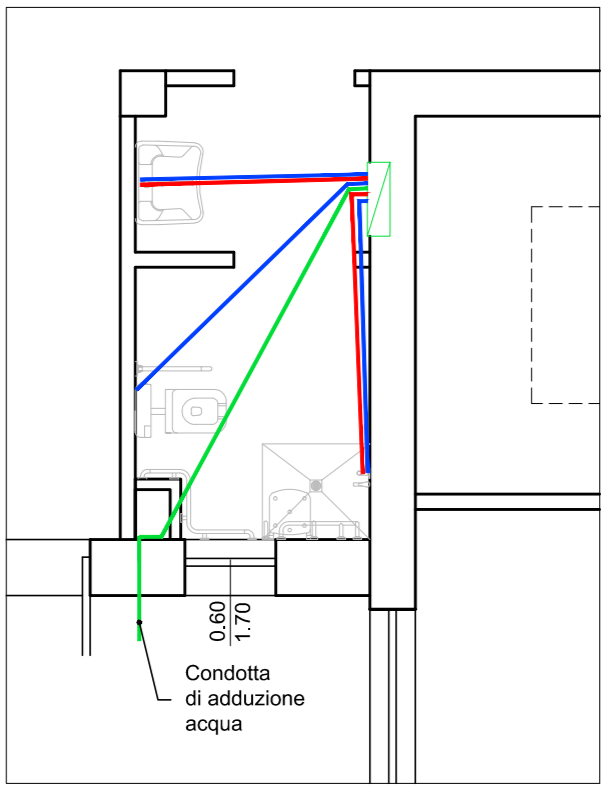
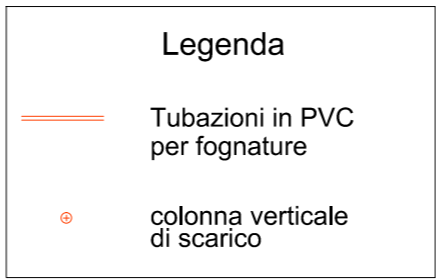


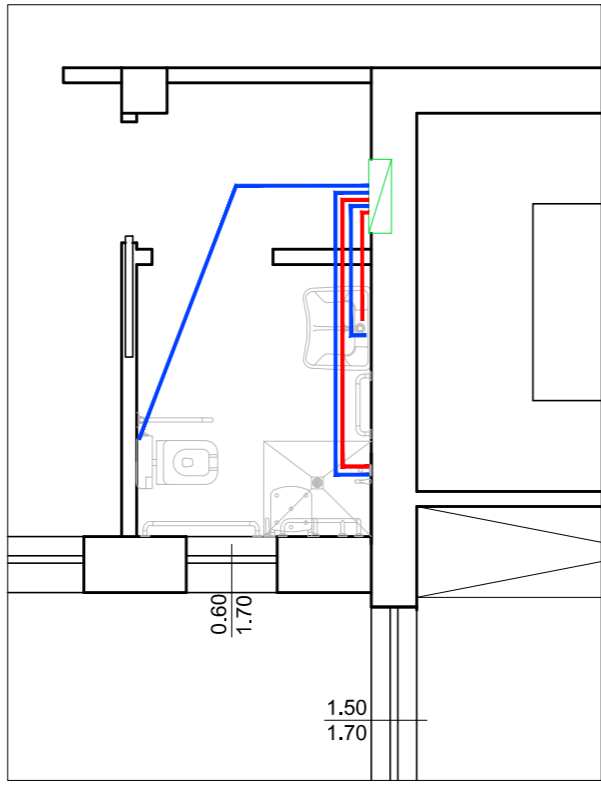
Schema impianto sanitario
- scarichi -
Piano Terra
Scala 1:50



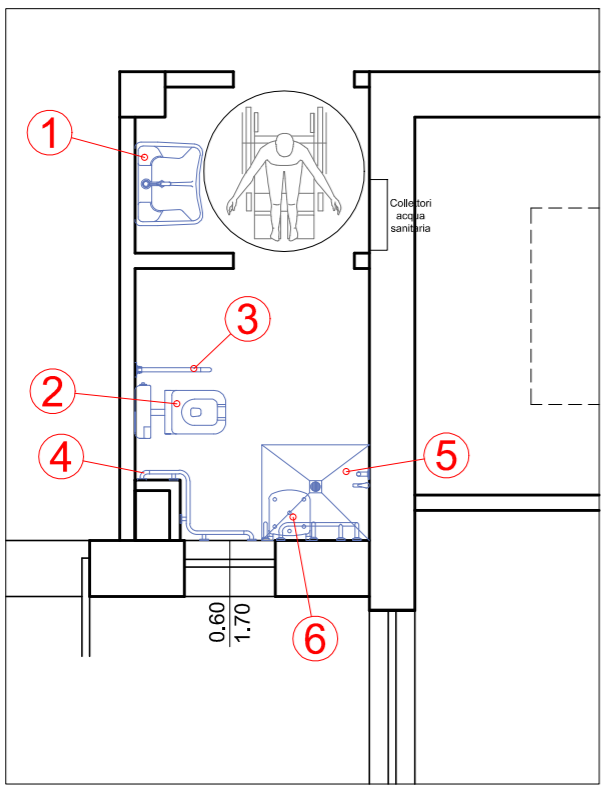
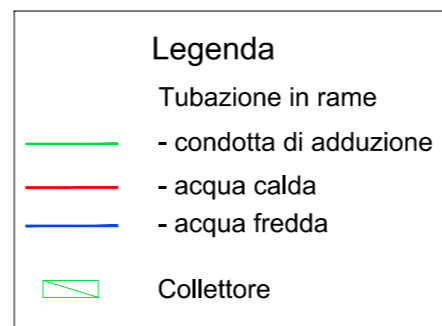
Schema impianto sanitario
- scarichi -
Piano Primo
Scala 1:50



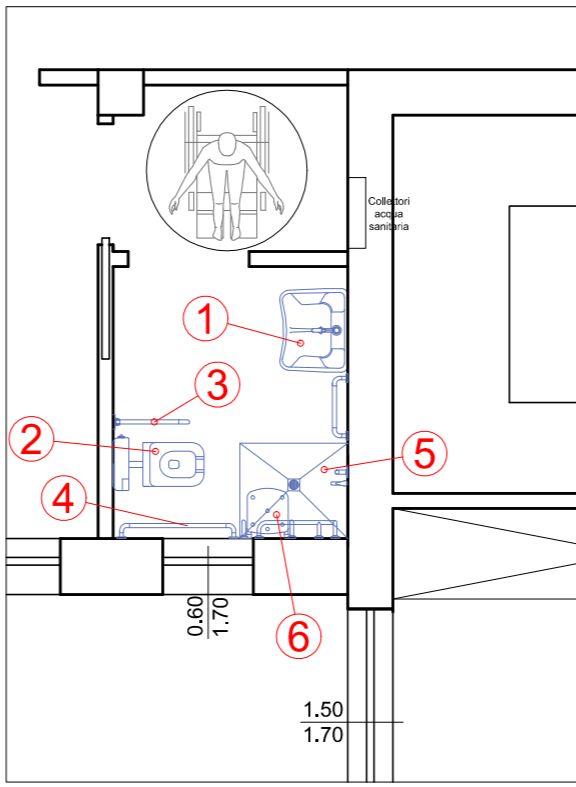
Schema impianto idrico sanitario
Piano Terra
Scala 1:50



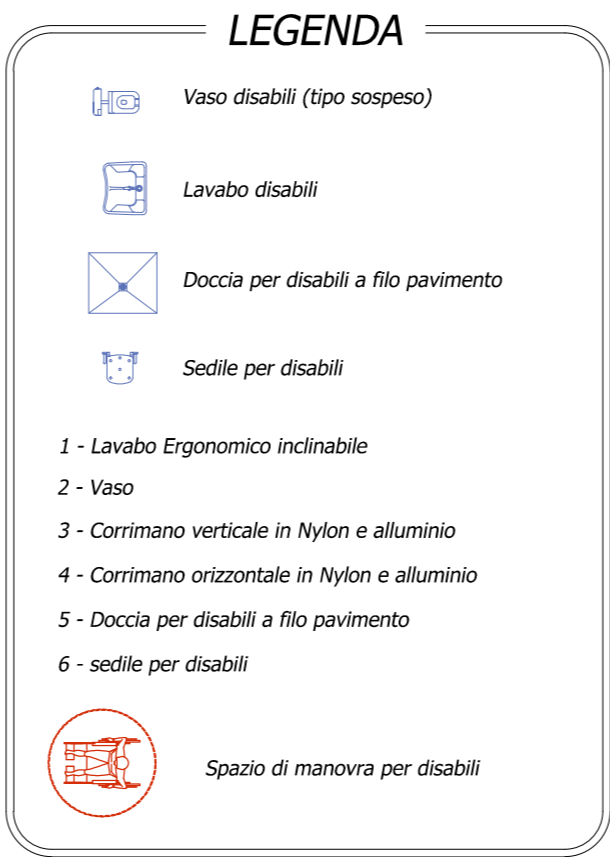
Schema impianto idrico sanitario
Piano Primo
Scala 1:50



Schema distribuzione sanitari
Piano Terra
Scala 1:50



Schema distribuzione sanitari
Piano Primo
Scala 1:50



COMUNE DI VILLA SANT'ANTONIO PROVINCIA DI ORISTANO

PROGETTO ESECUTIVO
MANUTENZIONE E AMPLIAMENTO CASA DI RIPOSO
II° STRALCIO FUNZIONALE

Studio Tecnico Associato
Ing.ri Orgiana A. & Orrù G.
Via C. Battisti 21/A - 08030 ORROLI (CA) - Tel./Fax 0782-847472

IMPIANTO IDRICO SANITARIO

TAVOLA	N° 7
SCALA	1:50
DATA	Nov. 2017

Il Sindaco:
Fabiano Frongia

Progettisti:
Studio Tecnico Associato
Ing.ri Orgiana A. & Orrù G.

Il Responsabile
del Servizio Tecnico
Geom. Rossella Ardu

Il Coordinatore:
Dr. Ing. Antonio Orgiana